

Q<sup>4</sup>  
2013

SCE

TIMES

Waste is a Terrible Thing To Mind ...

Jersey City, NJ

Uniondale, NY

Pittsburgh, PA

Lake Ariel, PA

SCE Environmental Group, Inc.

## The Walls Come Down.

SCE Crews brave winter conditions.

In the shadows of Rahway Prison lies the town of Avenel, New Jersey. Southwest of the Prison, SCE is changing the skyline. Crews are demolishing a former chemical manufacturing plant and, when demolition and restoration are complete, eight major structures, thirty-five tanks, two silos, and hundreds of feet of pipelines and rails will be gone. Working over



eighty feet in the bitter air and against deep blue skies, asbestos workers carefully remove panels of ACM, lower them to



the ground from aerial lifts, and send them off-site for disposal.

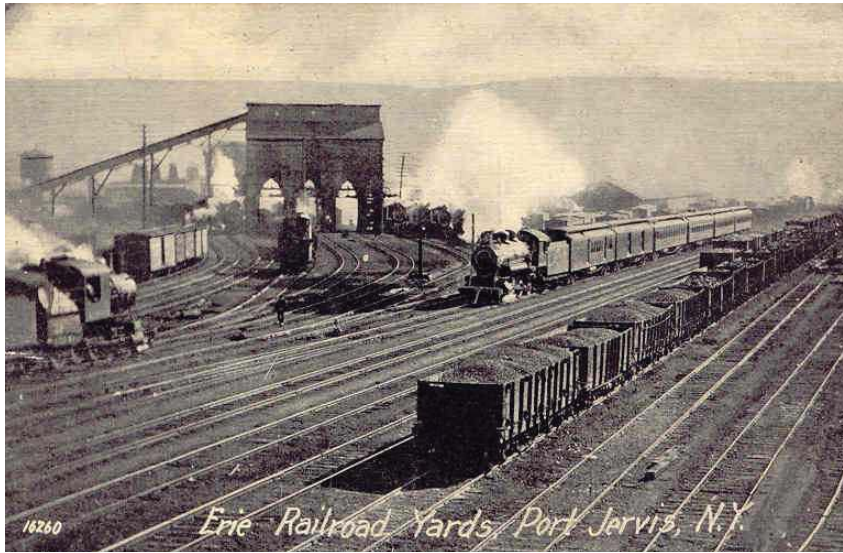
As evidenced by the forty men and women in the crew of New Jersey licensed asbestos handlers, asbestos abatement plays a key role in this project. Over 100,000 square feet of asbestos-containing panels, 100 cubic yards of friable asbestos, and 1,000 lineal feet of pipe insulation and fittings all required careful removal and disposal. In addition, Hazmat crews dealt

with a thousand tons of sodium silicate, two thousand tons of soda ash, and ten tons of hazardous lead waste.

The structures are being demolished into small manageable pieces using SCE's new Caterpillar 349 high-reach excavator that can extend eighty-five feet into the air, along with five large excavators equipped with shears, hydraulic hammers, pulverizers and grapples. Piece by piece, the scrap and waste is sorted and each stream is properly disposed. The use of a self contained, trailer mounted water suppression system that covers 196,000 square feet ensures zero dust on the project. When the demolition project is complete, concrete will be crushed and used as backfill and capped with topsoil and hydroseed to complete the remediation.

The project does not stop here. SCE has already been awarded a contract for the next phase of remediation at this facility. Work on that phase is expected to continue throughout the Third Quarter of 2014.





# Slurry Wall Protects Local Neighborhood.

*Historic rail site preserved.*

The Erie Turntable, one of the last remaining railroad turntables in the northeast, is located in a rail yard just a little north of the Central Business District of Port Jervis, New York. Concerned that

a potential petroleum plume from the property could impact the nearby residential community, the New York Department of Environmental Conservation instituted a project to contain the possible plume through the use of an underground slurry wall.

As part of the four month design-build project, SCE excavated a trench 30 feet deep by 1000 feet long in challenging and unforeseen ground conditions. With groundwater only ten feet below the surface, the task of constructing the concrete wall was complex.



Utilizing a method called deep soil mixing, crews prepared 50 ton batches of bentonite and cement in an on-site concrete silo and then injected the mix into the ground simultaneously with a soil drilling process. As a result, the concrete mix immediately filled the void created by the drilling operation.

Crews excavated, hauled, stockpiled, and replaced over 4000 cubic yards of soil to complete this project. Daily interactions with NYDEC kept the project on course throughout the process. Recently, SCE was awarded the second phase of the project which entails segregating and screening approximately 2000 cubic yards of material to make it suitable for backfill. Phase 2 is anticipated to commence in March of 2014. SCE completed this project with 8,150 man-hours of accident free work time.





# FOCUS ON THE FLEET.

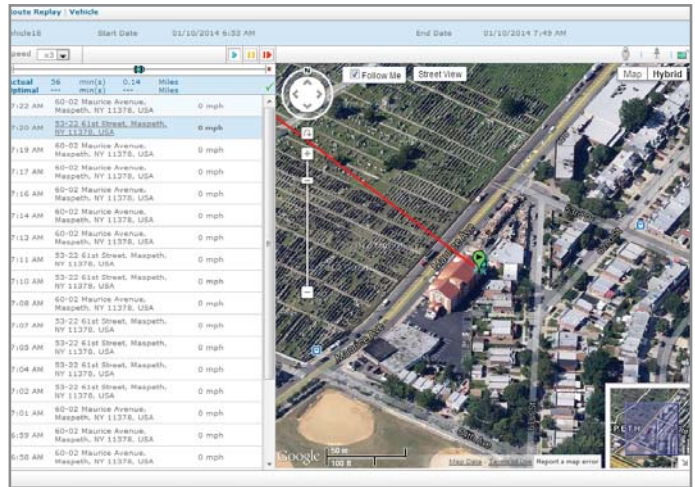
## SCE Installs GPS Monitors.

*Tracking system generates immediate results.*

With dozens of vehicles hauling hundreds of thousands of pounds of equipment, tools and supplies, the SCE fleet is a daily presence on federal and state highways, roads and construction sites. Thanks to the technology of GPS tracking, that fleet now operates in a more efficient manner and with a constant vigilant eye on its safe operation.

Each vehicle in the SCE fleet is now equipped with GPS monitoring and real-time reporting capabilities. As a result, vehicles can be directed to destinations with more efficiency and vehicle speeds can be closely monitored for compliance with posted speed limits. Each day, exception reports highlight speed violations in real time.

In only a few weeks of operation, the results are dramatic: a 65% decrease in excess speed violations. "SCE simply cannot accept the risk of its vehicles operating at excessive speeds or on wrong or prohibited routes," notes Susan Renna, Fleet Manager. Increased safety



monitoring is not the only benefit. "We expect many savings to flow from this technology," she continues, "from lower fuel and operating costs, to decreased maintenance and insurance premiums, we anticipate this valuable technology will fully justify the investment we've made."



## E-Spec Comes to SCE Fleet.

*There's an app for that.*



In the fourth quarter of 2013, SCE acquired the E-Spec vehicle maintenance system to better capture Vehicle and Equipment Condition Reports and to increase the timely repair of faulty equipment. The system utilizes both mobile devices and web-based desktop applications to capture pre and post-trip vehicle conditions as well as maintenance events. This also incorporates pre and post operation of all heavy equipment on job sites. Vehicle and equipment evaluations and maintenance events are instantly shared in real time among operators, technicians and management to mitigate the hazards of mechanical deficiencies.

In practice, a driver can activate the software on a smartphone and proceed through an in-depth vehicle safety checklist. Items requiring attention can be photographed in real time and the entire report is instantly sent to an office desktop for our Fleet Manager. There are even tests to ensure the integrity of

the inspection: GPS confirms that the inspector was in proximity of the vehicle and response timers assure that the inspection was more than simply a rush through the checklist. The system shows tremendous potential to reduce maintenance costs, reduce vehicle downtime, and increase vehicle and equipment safety.

# SCE Welcomes New Chief Financial Officer.

*Preate delivers years of experience.*

With over 40 years of experience as a leading Certified Public Accountant in Northeastern Pennsylvania, Carlon E. Preate has joined SCE as Chief Financial Officer.

Holding a Bachelor of Science in Business Administration from the University of Scranton and an MBA from the New York University Graduate Business School, Mr. Preate's illustrious career began in New York City with Arthur Andersen & Co. In the mid-1970's, he joined the firm of Parente Beard LLC (formerly, Parente Randolph). The firm is the largest independent consulting and accounting firm in Pennsylvania and one of the top twenty in the nation.

Mr. Preate served on the Firm's Executive Committee and Board of Directors and was the Partner in Charge of the Northeast Practice Region. He has provided accounting, auditing and consulting services to a variety of business enterprises of all sizes as well as non-profit and governmental entities.

His specific industry experience includes waste disposal, construction, manufacturing, trucking, warehousing, broadcasting, and retailing. He has provided consulting services on a variety of issues including strategic planning, organizational structure, budgeting and treasury management, cost analysis, mergers and acquisitions, internal controls, financing transactions, family business transitions, and litigation support.

He is currently a member of the American Institute of Certified Public Accountants and the Pennsylvania Institute of Certified Public Accountants. He is also a Director of the Diocese of Scranton Finance Council, Northeastern Child Care Services, the Wright Center for Graduate Medical Education, and the Women's Resource Center.

Carlon's wealth of experience will prove invaluable as SCE continues its dramatic growth rate and continues with its acquisition strategy in 2014. "With Carlon's vast experience on board," notes Jody Cordaro, "SCE will continue to develop the systems and controls necessary to meet the increasing needs of our clients well into the future."

Welcome aboard, Carlon!



## Ohio grants Asbestos Contractor License to SCE

*Geographic spread continues.*

In December, the Ohio State Department of Health issued an Asbestos Contractor license to SCE and cleared the way for the company to begin asbestos abatement

activities immediately in the Buckeye state. Client Manager Jeffrey Marquardt sees abundant opportunities. "We have existing clients with work to be done in Ohio and we firmly believe there are new opportunities as well. Our immediate challenge is to get the word to our loyal clients that our territory has again expanded and to let new clients know about the new team in town."



## New Offices Ready for Occupancy.

*Major Expansion goes fully operational.*

Just a few months after construction began, the major expansion of SCE's corporate office is complete. A vastly expanded engineering area provides much needed elbow room for plan preparation and review and a new Board Room accommodates the growing administrative staff. Fully equipped with the latest in computer technology and video communication systems, the new center promises to deliver higher efficiency and more productivity for SCE and our clients.



## SCE Rolls Out New Pension Benefits. New Program takes effect in 2nd Quarter.

In early 2014, SCE employees will have access to a new group of pension and asset management benefits. Unveiled at the company's Town Hall meeting in late December, the program, administered by FNB Wealth Management will provide new and improved options for qualifying employees. Speaking on behalf of FNB, representatives Ted Kocher and Andrew Cappucci discussed the exciting new programs to be unveiled in the coming months.



# 2014 Safety Committee Installed.

*New Team Begins Year of Meetings.*

As the new year begins, SCE is pleased to announce the latest installation of the company's Safety Committee. Office personnel Mariah Wheeler, Susan Renna, and Bruce Morgan join field personnel Don Wallace, William Quinn, and Jason Diaz in an ongoing effort to preserve the company's stellar safety record and push safety compliance to even higher excellence.

The Committee meets monthly and is designed to keep information flowing between the field and home office. With focus on field observations and the full investigation of losses and near losses, the team will analyze policies and procedures that affect safety and make changes to those practices to improve overall safety.

To be effective, the Committee needs input from all employees. The current team was selected to provide every employee easy access to a team member. "We encourage all of our employees and clients to reach out to a Safety Committee member with an observation or suggestion," notes Corporate Health & Safety Director Dale Nat.

While Pennsylvania does not mandate the creation of Safety Committees, the State Department of Labor audits them as part of a company's Experience Modification Ratings. "Of course," says Nat, "we take these measures with an eye on EMR, but our fundamental concern is that every employee goes home after every job unharmed."

Do you have a suggestion or comment for the Safety Committee? Email your insight to [BMorgan@scenv.com](mailto:BMorgan@scenv.com). Suggestions are considered confidential and your candor is welcome.

## Watch for "Spill." Monthly email update takes hold.

In an effort to inform our partners, employees, friends and families about SCE's ongoing developments and evolving capabilities, we have begun a monthly email blast to our growing email base. "It's a short message - only a few sentences - but it keeps the people in our world informed," notes Bill Bradican, Sr. Client Manager.



### The Spill

SCE Environmental Group's Email Update.

#### Did you know ...

SCE utilizes Dry Ice Blasting as an alternative to high pressure water or sand blasting. The basic premise behind this Dry Ice process is to use CO<sub>2</sub> pellets as the media to clean surfaces similar to sand blasting or sanding. These pellets are "blasted" out of the unit similar to water from a water jet or sand from a sand blasting operation. The main difference between those technologies and the Dry Ice process is that the CO<sub>2</sub> dissipates upon impact leaving only the residual waste. This process effectively minimizes the volume of waste and thereby delivers great value to our clients.

A recent message reminded clients of SCE's capabilities with Dry Ice blasting. Future Spills will advise of bids won, interesting job insights, and even some humorous diversions. Keep watching your email for our latest.

Not on our email list? Drop a note to [BBradican@scenv.com](mailto:BBradican@scenv.com) and mention our monthly email list.

## SCE Holds Annual Town-hall.

*This year, all employees get “the boot.”*

Every year, SCE features a day-long meeting full of Safety Training, Company Reviews, and Annual Awards. This year, field techs and supervisors “got the boot” - in the form of new boots that comply with more stringent puncture resistance and electrical conductivity ANSI Z41 standards. Although the new boots are not required by all clients and jobs, they represent a higher level of safety and are now standard gear among SCE field personnel.

As is customary, SCE’s Townhall Agenda was jam

packed with lessons learned, safety reviews, company highlights, and more. Featuring presentations by field supervisors Nate Butler, Mike Dahlgren, Fred Rindock, Jeff Trapper, and Don Wallace, and office personnel Bruce Morgan, Andrew Farr, Susan Renna, and Bill Bradican, the group reviewed company policies on safety, employee rights, office procedures, vehicle usage, and client developments.

The day closed with comments by company President, Jody Cordaro. “I look at all of you and see the heart of SCE,” he commented. “You work in the heat of summer and the bitter of winter and get the job done with exceptionalism and safety. Under difficult conditions you deliver on our promises to our partners and keep each other safe and unharmed. It is my distinct pleasure to have you as part of our team.”



## 2013 Annual Awards. *Rindock grabs top award.*

With a record of outstanding performances at jobsites including Port Jervis, NY and Carteret, NJ, SCE’s Project Foreman of the Year, Fred Rindock, accepted his award from company President Jody Cordaro. Citing the outstanding service Fred has delivered to the company over many years, Mr. Cordaro presented him with a family vacation to Disney World complete with travel, accommodations, admissions, and spending money.

Experience like Fred’s does not come easily. With over twenty-four years in the heavy equipment and construction industry (16 of which are in the

direct supervision of environmental remediation and emergency response), he’s seen it all. His experience includes USEPA Superfund sites, multifaceted landfill projects, and demolition and decontamination projects around the world. Now he can add Disney World to places his career has taken him. Congratulations, Fred!

Other winners at the annual awards presentation included Joe Decker for overall “Excellence,” Aaron Paradise for “Safety Excellence,” Sergio Ayala for “Dressed for Success,” Bill Quinn for the “Core Award,” Jonatan Rios for “Rookie of the Year,” and Kevin Condrón for “Employee of the Year.” Each of these recipients selected their choice of a mini Ski Vacation, a Hot Air Balloon ride, a chance to drive a Ferrari racing car, or a hands-on flight lesson. Congratulations to all of our winners!



## Last Thoughts ... A Letter From The President



As the year comes to a close, I want to personally thank all of our employees and their families for the efforts and sacrifices they make on a daily basis. I proudly watch this Team work together to achieve incredible results and to keep each other safe and unharmed.

To our partners, a warm and sincere thank you for placing your trust with us and placing your business with SCE. It is a Core Value of this organization to deliver effective solutions to your environmental challenges and we are unyielding in delivering on that commitment.

I also want to share with you a matter of personal pride. The town of Dunmore, Pennsylvania enjoys a great heritage of football and an amazing capacity for giving. This holiday season, we at SCE had a chance to participate in these two great traditions. Shortly before Christmas, the cheerleaders and players in the Dunmore Buck football program did something truly selfless - they visited the less fortunate and the elderly of the community and not only delivered Christmas trees but also stayed to decorate them and share some Holiday spirit. SCE was happy to financially participate and to provide a few four-wheel sleighs and drivers to assist.

On these positive notes, we bring 2013 to a close and eagerly look forward to a fruitful, fulfilling and safe 2014.

Sincerely,

*Jody Cordaro*

Jody Cordaro, President



SCE ENVIRONMENTAL GROUP, INC.  
1380 MT. COBB ROAD  
JEFFERSON TOWNSHIP, PA 18436  
(570)383-4151 (570)687-9524 (FAX)

Join us online.



[www.SCEenv.com](http://www.SCEenv.com)



[Linked in](#)