

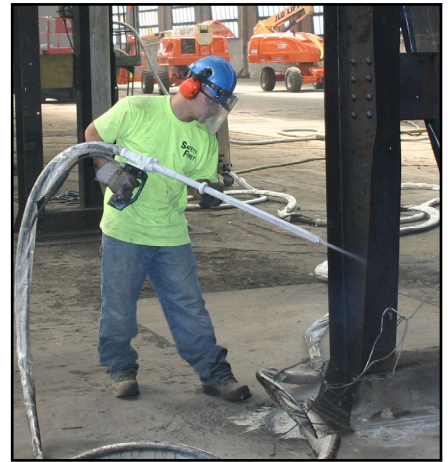
PROJECT PROFILE - FACILITY DECONTAMINATION

Bethlehem, PA

August 2004 - November 2004



The interior of one of nine bays - each 440' long.



Dry Ice blasting with minimal residue.

Objective:

Provide facility decontamination and cleaning services to an abandoned building at the former Bethlehem Steel Plant.

Solution:

SCE was contracted to provide cleaning services for a 155,000 sq. ft. building that was built in the early 1900's and used for locomotive repairs and heavy machinery repairs for over 100 years. Specifically, SCE cleaned the metal trusses, roof panels, perlin, beams, and horizontal surfaces throughout a total of nine (9) 440'l x 40'w x 46'h bays in preparation of building a residential complex.

SCE utilized Dry Ice Blasting as an alternative to high pressure water or sand blasting. The basic premise behind the Cold Jet process is to use CO2 pellets as the media to clean surfaces similar to sand blasting or sanding. These pellets are "blasted" out of the unit similar in nature to water from a water jet or sand from a sand blasting operation. The main difference between those technologies and the Cold Jet process is that the CO2 dissipates upon impact leaving only the residual waste behind which results in a viable waste minimization process saving the client money.

SERVICES PROVIDED

- Facility Decontamination
- Dry Ice Blasting



SCE ENVIRONMENTAL GROUP, INC.