

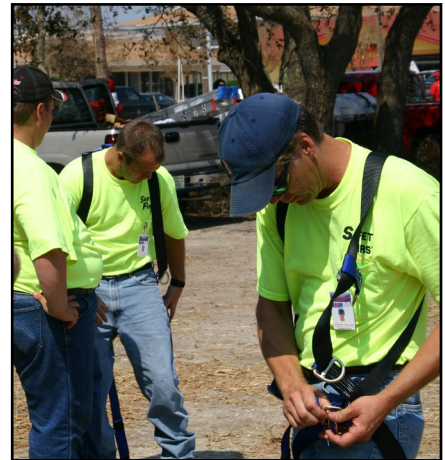
# PROJECT PROFILE - HURRICANES CHARLEY AND IVAN

Ft. Walton Beach, FL

September 2004 - November 2004



Boats line the water's edge as the storm surge subsides.



## Objective:

Provide temporary roofing and tarping of homes throughout Florida affected by the Hurricanes.

## Solution:

SCE deployed 122 workers from Pennsylvania to Florida within 4 days of the hurricanes. SCE performed temporary tarping of residential and commercial properties under Air Force Center for Environmental Excellence (AFCEE), Army Corps of Engineers Jacksonville District and the Federal Emergency Management Agency (FEMA) contracts.

SCE crews covered over 125,000 sq. ft. per day for a total of 4.3 Million Sq. Ft.

## SERVICES PROVIDED

- Emergency Response



SCE ENVIRONMENTAL GROUP, INC.