

Q<sup>4</sup>  
2014



# TIMES

Waste is a Terrible Thing To Mind ...

SCE Environmental Group, Inc.

Jersey City, NJ

Uniondale, NY

Pittsburgh, PA

Lake Ariel, PA

Nicholson, PA



## SCE Ends the Year with a Bang.

*Twin Silos fall as the year closes.*

In a year of record-breaking achievements, SCE closed 2014 with the successful implosion of two, 135' tall, reinforced concrete storage silos in Jenkins Township, Pennsylvania.

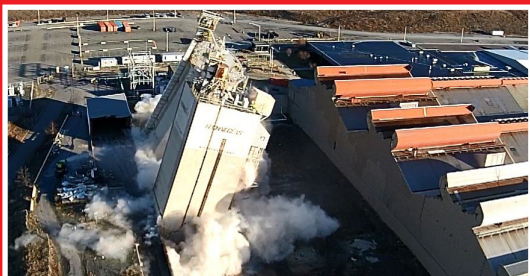
Demolition and site work are well underway at the former Techneglas factory which was built in 1968 to manufacture television faceplates; the thick glass coverings on picture tube televisions. In the 1990's, more than 2,500 people were employed at the 1,000,000 SF facility. SCE has been engaged for the demolition and site work, which dramatically began with the implosion of the building's twin silos.

The implosion happened within moments of 9 a.m. on December 29th. Timing was critical since the old factory lies in proximity to the airspace of an international airport. The Federal Aviation Administration offered only a narrow window of opportunity. Two loud sirens at 8:58 a.m. gave residents a warning of the blast. Another short burst of sirens went off a minute later, followed by the countdown before the explosions.

Those in attendance, including local residents, members of the media, and others involved with the project, wore ear protection during the blasts and congregated nearly 2500' from the blast site.

"We imploded from the bottom so they would fall in on themselves," said John Bistran, the Site Manager for SCE. "They fell right on schedule, on time, and

*(Continued on page 2)*



SCE's Drone Cam captures the implosion.



## *Twin Silos* (Continued from page 1)

with minimal dust for this type of implosion.”

SCE utilized a collection of portable Dustboss water canons to continuously spray the towers in the moments leading up to the implosion. Within minutes of their fall, the dust had settled and the brilliant blue sky of the cold December day returned.

The silos had been used to store different dry chemicals in the manufacturing process of televisions at the Techneglas plant, which closed a decade ago. “Between 2012 and now, we had gross abated those materials and decontaminated the silos to get ready for this stage,” said Nat, adding there is no risk to the public. He noted that crews placed monitoring devices to measure chemicals, dust and particulates in the air around the perimeter of the property and in adjacent locations. “We also have a monitoring station down on Whispering Way in the neighborhood, as well as a seismograph to monitor real time conditions,” Nat said.

Crews immediately began the process of demolishing the remainder of the warehouse that is still standing on the site. When demolition is finished, the proper-

ty owners will seek build-to-suit opportunities ranging from 500,000 SF up to the property’s fully entitled 1,506,000 SF footprint. Due to its prior use as a major manufacturing center, the site has significant in-place utilities capacity including dual 69 kV substations, 12” water and sewer mains, ample gas service capacity and Class I rail infrastructure, providing utilities and transportation infrastructure unmatched by any other warehouse/distribution/manufacturing development sites in the region. In addition, there is excess acreage on the property providing for the future development of up to an additional 1,300,000 buildable square feet.



*Dale Nat, IH*

## **SCE Health and Safety Team Keeps Sites Safe**

*Nat, Tamargo, Tobias and Nunez meet challenge.*

**D**ale Nat, SCE’s Corporate Health & Safety Officer, continues to lead the company with Safety Audits, ESA reports, ACM inspections and surveys. As our Corporate Health & Safety Officer, Dale’s dedication to safety and stewardship remains second to none. Under his leadership, Frank Tamargo has successfully completed several projects in NJ, Yoeny Nunez oversees the safety at the former Techneglas demolition site, and Roger Tobias provides safety leadership on projects throughout PA, NY, NJ, and CT.

With a record number of Loss Prevention Observations and Site Inspections in 2014, this team of dedicated professionals are driven to keep safety at the forefront at every jobsite.

All SCE crews are trained in the LPS Safety System. With its emphasis on behavior-based safety, LPS has repeatedly proven effective.



In addition to crew training, the system also features powerful management tools including Near Loss Incident Reporting, Loss Prevention Observations, Job Loss Analysis, and Loss Prevention Self Assessment. The SCE H&S Team relentlessly gathers this information on a daily basis and implements the lessons learned from these valuable tools.

## New Awards Cap 2014

*Final quarter breaks record.*

Capping a successful year of contract awards, SCE heads into 2015 with a record amount of work in process. Leading the late year awards were Multi-Million dollar contracts in upstate New York.

### ***Carroll Town Landfill***

In late 2014, SCE was awarded a contract by the NY Department of Environmental Conservation for the remediation of the Town of Carroll Landfill in upstate New York - a Superfund Site. The landfill operated as a municipal solid waste landfill from the early 1960s to 1979. Records indicate that industrial wastes were disposed in the landfill during the period of operation. The contract, valued at \$2.5MM, calls for the excavation of soil and waste, consolidation of two waste cells into one, installation of a soil cover over the consolidated waste mass, and site restoration. With specifications calling for over 20 acres of site clearing, 30,000 cubic yards of waste consolidation, 50,000 tons of backfill and topsoil placement, and extensive site restoration, the project is scheduled for commencement in the first quarter of 2015.

### ***New York Power Authority***

In October, SCE was awarded an Emergency Response Service contract for the removal of asbestos, lead and PCB's. This five-year contract with the New York Power Authority covers the Albany Central New York Region for the Power Authority and requires three-hour emergency response at Power Authority facilities in the coverage area. SCE has developed emergency response units fully stocked with the necessary tools and equipment to respond on a moment's notice to NYPA emergencies.

## Drone Adds New Perspective

*High perch provides unique view.*



Whether it is providing dramatic video clips of major jobsite events, or documenting a bird's eye view of job progress for clients at the home office, or assisting in the assessment of new bids, SCE's new quad-copter drone is proving to be an invaluable tool. Equipped with flight stabilizing gyros, GPS, and compass, as well as an image stabilized, gimbel-mounted high definition camera, the drone provides visual perspectives heretofore available only via aerial photography but at a fraction of the cost.

***Need an aerial view of your jobsite?  
Call William Bradican, Director of Client  
Services, to arrange a flyover.  
(570)383-4151 Ext. 15  
or email at  
BBradican@scenv.com***



## SCE Fills Biohazard Niche.

SCE's presence in the world of biohazard cleanup continues to expand. Under agreements with the a County Coroner, multiple Housing Authorities, and several Health Care Facilities, the company is becoming a leader in this specialized service. "Our professional, safe and organized response brings order to our Clients' chaotic circumstances," notes Program Manager, Bill Bradican.

# Highlights of the 2014 Season

*Diverse projects solidify experience and reflect new areas of growth*

The 2014 season represented great diversity in the scope, range and geography of the company's efforts. From New England to Puerto Rico to Texas and Oklahoma, and of course the tri-state NY Metropolitan area, SCE crews excavated, abated, demolished, installed and constructed a myriad of projects. Projects such as the demolition of a chemical plant in Avenel, NJ, and the interior demolition of a landmark building at Rutgers University came to a conclusion and new projects came to the forefront.

## ***Tank Cleaning - Northumberland, PA***

Objective: Remove all remaining products from tanks, hot oil systems, and containers on site at an asphalt terminal, storage and processing center in central Pennsylvania.

SCE was awarded this contract for the cleaning of twenty-two above ground storage tanks containing such diverse products as asphalt, soap, Indulin, #2 Fuel Oil, Hydrolene, Kendex, waste oil, and hydrochloric acid.

The task required not only careful handling of over 10,000 gallons of various materials, but also an extensive preparation of safety documentation in the form of JHA's and MSDS sheets for the various chemicals on site. SCE completed the job on time, on budget, and with no incidents or injuries.



## ***Impacted Soils - Tampa, FL***

Objective: Remove soil contaminated beneath the concrete slab of a Dry Cleaning operation on the ground floor of a Luxury Hotel.

SCE was awarded this contract to remove soils impacted with dry cleaning chemicals that had leached into the soil below the concrete slab of the building and below the loading dock associated with their cleaning operation.

The project consisted of removing a concrete wall to provide access to the contamination area, the removal of soils impacted by tetrachloroethene to a depth of six feet below the slab, and complete restoration of the site. Work was completed with minimal impact to the ongoing operations of the hotel. Careful coordination of the movement of equipment and materials ensured that hotel employees and guests remained safely away from the operation.



## ***Remediation System Installations - Greater NY, NJ***

**Objective:** Install Remediation Systems at various gasoline service stations in the greater New York area.

Throughout 2014, SCE installed a variety of Soil Vapor Extraction and Air Sparge remediation systems in cities in New York State including Flushing, Whitestone, Baychester, Jamaica, and Maspeth, as well as Southampton, New Jersey. These systems are designed to remediate absorbed and dissolved-phase hydrocarbons detected in site soil and groundwater. While each job posed its own unique challenges, projects typically include the installation of system wells (soil vapor and dual phase extraction), the trenching and installation of related subsurface conveyance pipes, the construction of an equipment compound, the installation and connection of the various components related to the system, electrical connections to the system, waste management, the installation of small buildings, fences and bollards, concrete work as necessary, and site restoration.



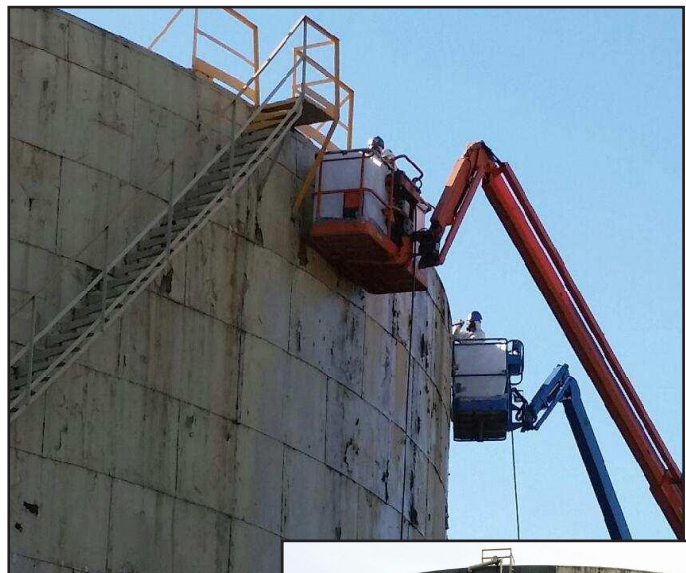
Often these installations occurred at active facilities requiring careful coordination of task and traffic flow. Since most of these stations were in congested areas frequented by the general public, constant vigilance of pedestrian traffic around the site and vehicular traffic across installation trenches was an absolute.

## ***Asbestos Abatement - Edgewater, NJ***

**Objective:** Removal and disposal of asbestos-containing materials from a large Fuel Storage Tank and associated buildings.

SCE was awarded this contract to remove and dispose asbestos containing materials in a large aboveground fuel tank and four related structures at a tank farm located in New Jersey. The task included the removal of over 20,000 sq. ft. of Transite panels, 450 sq. ft. of boiler insulation, 800 sq.ft. of flooring materials, 7,000 sq.ft. of roofing materials, and miscellaneous gaskets and joint compounds.

Crews of NJ licensed asbestos workers wore fall prevention gear and worked from aerial lifts removing panels of Transite cladding the Tank and buildings. All work was completed by hand and with full implementation of safety and asbestos containment procedures. The project completed ahead of schedule, under budget, and without incident or injury.





# SCE Expands Presence in Marcellus Region.

*Nicholson Facility to serve as hub.*



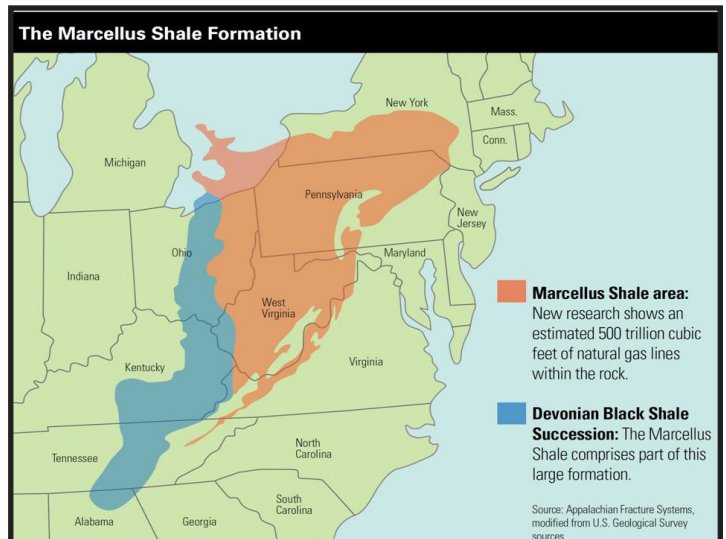
Manager, Peter Sobol, “we are poised to operate a day-to-day water hauling operation and be at the ready to provide emergency response.”

The Marcellus region has attracted major players in the energy sector and these companies demand high

As a natural outgrowth of SCE’s expertise in environmental remediation and the company’s long-standing relationship with the petroleum industry, SCE has undertaken a substantial investment and commitment to the Marcellus shale industry. Acquiring a fleet of Water Vacuum Trucks and related equipment and retaining the personnel to operate a 24/7 operation, SCE is now transporting clean water to fracking sites and hauling away fracking water to approved disposal facilities. In addition, the company has entered into emergency response agreements with key players in the region.

A new satellite facility in the Nicholson area serves as SCE’s hub in the Marcellus region. Complete with administrative offices and several bays for the maintenance of vehicles, the facility is currently home to 55 staff members and experienced drivers. “From this location,” notes company Fleet

standards of safety and financial responsibility from the companies with whom they deal. SCE is an approved contractor in PICS and ISNetWorld - a clearing house utilized by the petroleum industry to evaluate and monitor contractors.





# SCE Plays Role in Renovation of Scranton Landmark

## *Former North Scranton Junior High School saved from Demolition.*

In Scranton, Pennsylvania stands the former North Scranton Junior High School. An imposing structure of grandiose architecture, the building dominates the landscape from its perch overlooking the Green Ridge section of the community. Built in the 1920's, the Gothic building showcases an iconic clock rising high above the junction of Main and Green Ridge Streets.

Time has not been kind. The beauty of the stone facade belies a building interior ravaged by time,

abandonment, and weather. Vandals and animals contributed to the decay as well. In 1993, the building was scheduled for demolition.



Around that time, Gerald Langan, President and CEO of the non-profit Goodwill Industries of Northeastern Pennsylvania, took great interest in preserving the landmark. Over twenty years in the planning and approval process, the building is now owned by Goodwill and stands ready to be transformed into 58 senior apartments and an 800-seat auditorium for community events.

SCE's role in the renovation includes interior demolition, and the abatement of asbestos-

containing materials, lead-based paints and pigeon guano. SCE crews have led the abatement effort with a specialized team of professionals trained in the proper handling of these waste streams. Thrice daily safety meetings and routine air-monitoring activities serve as constant reminders to crew that safety is the first priority. Efforts began in late 2014 and are expected to continue throughout 2015.



## Last Thoughts ... A Letter From The President



As we look back on 2014, I am reminded of the blacksmiths of yore. With glowing coals and rugged tools, they learned that in the fire came strength; that raw iron could be coaxed into a stronger state through intense heat.

The imagery is not lost on SCE. This was a year in which we blazed new performance standards; and, to be sure, it was a year where we learned that the heat of that fire can burn. Dramatic growth in projects, staff, and revenue did not come easily. New personnel filled our offices and jobsites. New procedures designed to manage and control the growth came into being through design, trial, error, and improvement. New clients came on board with great expectations. Existing clients stayed with us with expectations of continued excellence.

In that heat, we grew. We formed. We bonded like the molecules of iron tempered into hardened steel. And we emerged from 2014 as a better and stronger SCE than we have ever seen. To say that I am energized to carry this invigorated company into 2015 is an understatement of the greatest proportions.

To our clients, both new and existing, we thank you for placing your confidence in SCE in 2014. And to the hard working people of SCE and its affiliates, I thank you for another prosperous and record setting year where we accomplished great things, learned valuable lessons, and came home at the end of the day safe and sound.

Wishing you a prosperous and safe 2015.

Sincerely,

*Jody Cordaro*

Jody Cordaro, President



SCE ENVIRONMENTAL GROUP, INC.  
1380 MT. COBB ROAD  
JEFFERSON TOWNSHIP, PA 18436  
(570)383-4151 (570)687-9524 (FAX)

Join us online.



[www.SCEnv.com](http://www.SCEnv.com)



[Linked in.](#)