



TIMES

Q²
2016

Waste is a Terrible Thing To Mind ...

SCE Environmental Group, Inc.

Jersey City, NJ

Uniondale, NY

Washington, PA

Lake Ariel, PA

Nicholson, PA

Barging In!

Latest Phase Requires Floating Work Platform.

Throughout 2015 and for the first half of 2016, SCE crews have worked on an uninterrupted series of phases at an industrial site in New York State. The project started with the interior demolition and decontamination of a 160,000 square foot, four-story former manufacturing facility. The former manufacturing site contained 46 tanks and vessels along with conveyor systems, piping, and mixing vats all contaminated with RCRA metal waste that had to be handled accordingly.

Following the successful demolition effort, SCE tackled a challenging 4,000 ton soil excavation project requiring the installation of sheet piling around the entire excavation area and a slide rail shoring system to stabilize the area between two buildings at the site. Soil disturbed during excavation released a very strong odor that had to be contained with an eight thousand square foot tent sprung structure measuring over 40 feet high at its peak.

Along with the soil excavation project, SCE additionally abandoned and cleaned eleven underground storage tanks including four 30,000 gallon tanks, two 20,000 gallon tanks, one 10,000 gallon tank, and four 2,000 gallon tanks. Over 20,000 gallons of wastewater and fifty tons of sludge and gel material were removed from the tanks.

The latest phase of the project, completed in the second quarter of 2016, called for the remediation of an inlet basin at the project site. The effort included the removal of universal waste, the abatement of hazardous materials, and the dredging of the basin.

The challenge for this phase of the project was access. SCE machines simply could not be positioned to reach the impacted soil and properly dredge the basin.

continued on page 2



Nearly aground at low tide, an SCE Excavator works from atop a barge.

“Barging In” *continued from page 1*

The solution was to load SCE’s CAT 325 excavator onto a 100’ x 40’ barge and float the machine into position on the shore of the basin. The barge was delivered to the site using a tug boat hauler and was placed in position during high tide. The barge was strategically placed to allow the excavator to maneuver along the work area in close proximity to the impacted shoreline.

A turbidity curtain was installed within 25’ of the barge and an oil boom protected against the incidental release of oil during excavation activities. Soils were dredged out only during low tide and stockpiled at the work area for decanting until the soil was ready to be moved off site to a licensed landfill.

To protect other areas of the property, SCE installed a 40 Mil HDPE liner and covered it with a 6 Mil polyethylene liner which was removed each day. This kept the worksite in the cleanest possible condition. All dry soils were loaded out into dump trucks that were lined with polyethylene liners. All dump trucks had water proof gaskets on the back door and a tarp system to ensure



A second Excavator works from land to dispose of dredged material.

against leakage through transit.

After the impacted soil had been removed, SCE back-filled the area with sand. In total, SCE excavated 2’ to 4’ below ground at low tide along a 75’ wide portion of the inlet shore.



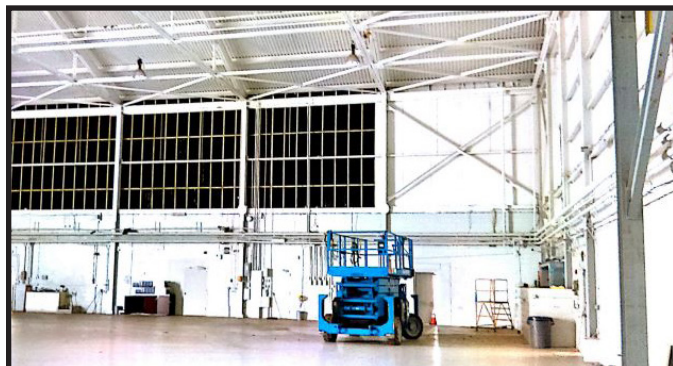
SCE Abates Asbestos at Teterboro. *Work at Historic Airport Underway.*

In Bergen County, New Jersey, SCE has been retained to remove asbestos containing materials associated with the demolition of Hangar 12 at Teterboro Airport.

Designated as the oldest operating airport in the New York City area, the airport has a colorful past. Located on 1,500 acres in the New Jersey Meadowlands, the airport’s first flight was in 1919. It served as the base of operations for infamous military aviation designer, Anthony Fokker; had its tower buzzed by celebrity Arthur Godfrey in a DC-3; and was considered as a potential landing strip by Capt. “Sully” Sullenberger, before his successful emergency ditching of US Airway Flight 1549 in the Hudson River. It is currently owned by the Port Authority of New York and New Jersey.

SCE’s scope of work at the historic facility includes the removal of asbestos containing materials in pipe insulation, fittings, duct insulation, metal siding, cement siding, cement board, roofing, caulking, mastic, fire doors, boilers, ceramic tiles, and wiring encountered during the demolition of one of 19 hangars at the facility

Work is expected to be completed by August of 2016.



SCE Crews Attend Semi-Annual Safety Stand Down

Event Highlights Culture of Safety

In late June, SCE conducted a Safety Stand down for all company crews. Held at a local banquet hall to accommodate all the attendees, the program featured guest speakers on topics including Heavy Equipment Awareness, Safe Driving, Fall Protection, Aerial Lift, Trailing of Equipment, DOT Compliance, Eye and Hearing Protection, Hazard Awareness, Lead and Asbestos Awareness, Bloodborne Pathogens, and numerous other safety topics.

In addition, a certified LPS Loss Prevention Safety Instructor conducted LPS training and issued LPS cards to attendees. The following day, crew members returned for First Aid and CPR training.



Contractor Transport Opens.

New Company to Service SCE and Outside Contractors.

In June, a new company joined the SCE service group. In response to a growing need both within SCE and in the marketplace, Contractor Transport, LLC, will provide transportation services featuring late model dump trucks, water trucks, vacuum trucks, and traditional tractors, trailers, and lowboys. “To better meet the unique requirements of state and federal truck-

ing regulations,” says Dean Argenta, Field Safety Coordinator, “we thought it prudent to take all trucking operations out of SCE and place them in a distinct entity better suited to meet our needs, the needs of outside contractors, and government regulators.”

To reflect evolving market demand, a number of trucks previously equipped with water tanks for the Marcellus gas play will be retrofitted with heavy duty dump bodies. With gas field operations dormant for the foreseeable future, retrofitting underutilized water trucks to dump bodies or day cabs is an effective response to the shift in demand.

continued on page 4

Contractor Transport - continued from page 3

Contractor Transport will be a fully functional stand-alone operation. Meeting the special staffing, training, and best practices of a large-scale trucking operation requires a dedicated and focused commitment to personnel, resources, and facilities. “We recognize that the needs of an OSHA-regulated environmental company are not the same as the needs of a national motor carrier under the authority of the Department of Transportation,” notes Health and Safety Director, Dale Nat. “We are currently developing the training and operational systems to ensure that Contractor Transport achieves the same lofty safety goals that SCE has achieved over the years.”

The new company will have vehicles in place and operational later this summer.

The Westchester

Second Quarter is Busy at Premiere Mall



Work continued throughout the second quarter of 2016 at ‘The Westchester’, an 890,000 square foot, upscale shopping mall in downtown White Plains, New York. Opened in 1995, and anchored by Neiman Marcus and Nordstrom, the facility is owned by Simon Property Group and is home to today’s most fashionable and well-known retailers.

SCE’s role in the overall remodeling and renovation of the facility includes the partial demolition of existing structures in the interior, exterior and food court areas of the mall. The effort includes the removal of floor surfaces and coverings from various common areas and vestibules, the demolition and removal of select walls, planters, facades and features both inside and outside the mall, and extensive demolition within the food court area.

Because the facility remains open to the public throughout the process, safety is paramount. When possible, work is done only at night. Where production needs require work during mall operating hours, SCE crews assure that work areas are safely isolated from mall patrons and take all reasonable precautions to protect safety and the shopping experience. The multi-million dollar project is slated for completion in the summer of 2016.



Containment systems with forced air keep dust from migrating to public areas and shops.

SCE Accepted Into Caterpillar National Account Program

Firm Meets Equipment Giant's Stringent Requirements.

SCE is pleased to announce that it has been selected to participate in the Caterpillar National Account Program. Caterpillar developed the Program to deliver value driven pricing and exceptional customer support designed to meet individualized Customer's requirements. More than a simple credit facility, the program, which features an unsecured line of credit, is reserved for the most credit-worthy contractors operating at the national level.



Contractors accepted into the program have access to all Caterpillar dealerships across the country. Parts, repairs, attachments and rentals are instantly available nationwide. The program also provides exceptional cash flow management and cost accounting features to protect contractor margins. With access to the vast Caterpillar dealership network, SCE personnel at remote jobsites can find quick solutions to equipment and maintenance needs. Downtime is minimized and projects are better able to stay on schedule.



A Crane removes top vent.

SCE Remediates Sand Elevator.

Work is the Latest for Manufacturing Client.

In April, SCE completed an effort to abate lead and asbestos and remediate a large sand elevator at an active chemical plant in Baltimore, MD. Additionally, crews were involved in the evacuation of liquid waste and sludge via Vac Truck, and the removal, transport, and disposal of PCB's, RCRA hazardous, high lead waste, remediation waste, and industrial waste. During Phase 1, crews trained in Aerial Lift operations removed the vent on top of the sand elevator. A crane lowered the vent, clad in lead based paint, carefully to the ground for proper handling and disposal. Crews then created a polymer containment system around the aboveground storage tank to ensure the capture of all fugitive paint chips.

In Phase 2, SCE crews remediated the ground surface. Initially, debris was shoveled into containers and placed in appropriate disposal containers. Next, power washers were used to thoroughly clean the surface areas. All water was collected in a sump along with other sediments. Once all surfaces were cleaned, the sump was pumped down. Sediments were loaded into containers and properly disposed at a licensed facility. The sump was then cleaned by crew members using pressure washers and following confined space entry procedures. Air was monitored throughout project to ensure good air quality was maintained.

Finally, in Phase 3, crews hung geo-screens in the cleaned tank. Geo-screens are high strength, flame retardant, woven polypropylene windscreen mesh used to contain dust, debris, sandblast, and paint over spray. Again, crews followed best practices while working from aerial lifts to hang the screens.

The challenging project was completed with no crew injuries.

SCE Commits to Disadvantaged Business Enterprises.

Latest Contracts Feature DBE, MBE, and WBE Participation.

With increasing frequency, SCE is party to contracts requiring revenue participation for Minority Business Enterprises (MBE), Women's Business Enterprises (WBE), and Disadvantaged Business Enterprises (DBE). Contract requirements are significant and carry onerous financial burdens for non-conformance. In the challenge, however, SCE has found opportunity.



"On the one hand," cites Chief Compliance Officer, Bruce Morgan, "our natural business sense is to preserve as much of the contract as we can self-perform. On the other hand, however, developing a viable

and effective D/M/WBE program opens opportunities for us that our less flexible competitors simply pass over." In addition, he notes, "SCE has long valued its position as a good corporate citizen and we view these efforts as serving that role as well."

SCE's contracts with the New York Power Authority, the Governor's Office of Storm Recovery, the Port Authority of New York and New Jersey, and many pending proposals for future work call for substantial allocations to disadvantaged businesses.

The company's strategy is four-pronged. First, SCE aggressively seeks D/M/WBE firms through a combination of Requests for Qualifications, data mining from government and private lists of certified

firms, and participation in events sponsored by D/M/WBE associations and government regulators. Second, the company maintains open lines of communication directly with government agencies to keep abreast of their latest regulatory efforts and to learn of new strategies and techniques for identifying qualified firms. Third, SCE carefully vets potential firms and, after they have met our standards of experience and safety, adds them to an in-house resource database of qualified D/M/WBE subcontractors. Finally, the company carefully documents its efforts. "While the goal is to achieve our set aside targets," reflects Director of Client Services, Kevin Gawason, "the reality is that sometimes we will not have access to a vetted and available subcontractor that has the safety credentials and background that is required to become a subcontractor for SCE. In such situations, we want to demonstrate to our regulatory partners that we have used good faith efforts to hit those targets."

In addition to the opportunities it has presented, the program has produced unexpected benefits as well. "When we first embraced the concept of a DBE recruiting program," notes Company President, Jody Cordaro, "we anticipated its impact on our ability to win contracts. We've been pleasantly surprised that other contractors find us to be a viable solution to their own set aside challenges. We routinely receive invitations to partner with other contractors and one of the added values that we bring to such partnerships is our maturing DBE program. We are exploring several Mentor-Protégé Program partners which would enhance the capability of these disadvantaged and small businesses to compete for federal procurement opportunities."

IS YOUR FIRM A D/M/WBE?

Certified D/M/WBE firms interested in joining SCE's Resource Base can contact Bruce Morgan at BMorgan@scenv.com for more information and for a Prequalification Package.



SCE crews remove parapet. Roofs to the right have been completed.

Harlem River Nears End

Work Nearly Complete At Historic Site.

Work continues at the New York City Housing Authority project at the Harlem River Houses. The project is part of a \$17 Million renovation under a Prime Contract with Rockmore Contracting Corporation. URS Corp serves as Construction Manager for the Housing Authority.

The Harlem River Houses are located at 151st street and the Harlem River Drive in the New York City borough of Manhattan, and cover 9 acres (36,000 m²) in Harlem. They were built in 1937 for African Americans (at that time in history some public housing was segregated). The Harlem River Houses were the first federally funded housing projects in the United States. Their construction and opening attracted national attention they are said to be the most successful public housing in New York. The architects designed a modern, spacious building that contained 574 apartments. The Harlem River Houses had child care, health care and public community rooms right on site, and rent in 1937 was \$21.00 a month. The buildings are 4 or 5 stories tall. When the project was completed, 11,000 people applied for the new apartments available. Today about 12 of the original tenants still live in the Harlem River Houses.

The Harlem River Houses are considered to be one of New York's landmarks. The complex was designated a Special Planned Community Preservation District, a zoning category created in 1974 to "preserve and protect ... superior examples of town planning or large-scale development." It was listed on the National Register of Historic Places in 1979. (Source: OpenBuildings.com)

SCE's multi-million dollar scope of work includes the removal of an asbestos-laden brick parapet that outlines each of several structures in the complex. Additionally, SCE is charged with the removal of window caulk containing asbestos in literally hundreds of windows in the many housing units, and with the restoration of radiators coated in lead-based paint.

Work is painstakingly slow. The complex is fully occupied and careful consideration must be given to the safety of the public and residents. Additionally, the demolition of parapet must be done with surgical precision with limited power tools. Caulk and paint removal is similarly manual-labor intensive.

After more than a year of working at the site, the end of the project is finally in sight. SCE expects to complete its portion of the contract in the summer of 2016.



I usually reserve this space to share my personal observations about our industry or the latest business development at SCE. This time, however, I'd like to share a decidedly different observation about the people with whom I am privileged to work.

This winter, two young feral cats took refuge from Northeastern Pennsylvania's bitter weather in a storage trailer located at the far end of SCE's equipment yard. Their survival became the mission of our entire office. First to discover them were Mariah Wheeler and Lauren Delguercio. The two transformed a corner of the storage trailer into a makeshift shelter. Twice a day, they braved winter cold to make sure the cats had food and water. Each morning, we would find two timid feline guests peering into our office back door.

Arrangements were made with a local vet to have the animals neutered and immunized but the cats proved less than willing to cooperate. It was quite the spectacle to watch a team of adults in winter gear unsuccessfully trying to corral two rather elusive cats into cages on the mornings of their vet appointments. This to be followed by calls to the vet asking for yet another new appointment.

Evidencing our failed trapping efforts, three kittens joined the pride this spring. Unlike their feral parents, these kittens were happily domesticated and went home with a particularly gullible father of three - me.

Our feral cats, now successfully neutered, continue to patrol our equipment yard and wait patiently each morning for food and drink.

My point in this story is simple: these are good people. They work hard and achieve amazing results for SCE. And they worry about things like feral cats in the cold. They volunteer for soup kitchens throughout the year. They arrange food drives and collect holiday presents for military veterans and school children. They are, in short, the soul of SCE. They are good people and I am proud to have them on our team.

Jody Cordaro, President

SCE ENVIRONMENTAL GROUP, INC.
1380 MT. COBB ROAD
JEFFERSON TOWNSHIP, PA 18436
(570)383-4151 (570)687-9524 (FAX)

Join us online.



www.SCEnv.com



[Linked in.](#)