



TIMES

Q³
2016

Waste is a Terrible Thing To Mind ...

SCE Environmental Group, Inc.

Jersey City, NJ

Uniondale, NY

Washington, PA

Lake Ariel, PA

Tunkhannock, PA

SCE Crews construct a prefabricated metal building to house the new system.

Under Construction. *SCE Replaces Treatment System.*

In upstate New York, SCE was retained to dismantle a groundwater treatment system at a former chemical production facility and to assist in the construction of a new system. Because the existing system performed a containment function, there was minimal time from the shutdown of the old system and the startup of the new system.

SCE's role included the removal of the former treatment system units and the demolition and disposal of an air stripper tower and holding tanks. In addition, SCE crews installed a containment slab and constructed a 40' x 60' prefabricated metal building and utilities to house the new system.

Safety measures were critical. Each day, SCE and the Client carefully reviewed lock out/tag out procedures to ensure that crews were protected from hazardous energy at the facility. In addition, SCE crews followed detailed confined space entry procedures to ensure that all entries into the holding tanks were monitored by a

designated safety watch trained in emergency response and rescue.

The project completed within the strict time constraints and on budget.



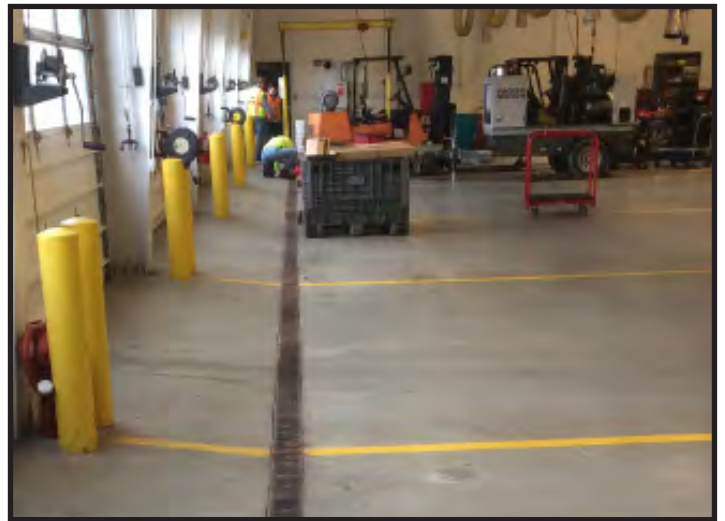
Did You Know:

All SCE Field Crews must complete 40 Hour training in satisfaction of OSHA Regulations 29 CFR 1910.120 (Hazardous Waste Operations), and 29 CFR 1910.146 (Confined Space Entry). In addition, all crews are trained in the Loss Prevention System of behavior-based safety and carry LPS certification.

SCE Remediate Cummins Facility.

Avetta Credentials a Prerequisite.

In Buffalo, NY, SCE was retained to clean out and replace trench drains and sumps located in the service bay of a company that services trucking, power generation, marine and industrial applications of Cummins products. The scope of work included the cleaning and preparation of two existing trench drains and sumps, the fabrication and installation of stainless steel liners within the drains and sumps, and the treatment of the areas with epoxy sealants. Material pumped from the drains and sumps was containerized for disposal.



In addition, SCE crews demolished portions of concrete flooring in preparation of new below ground sumps and performed hydraulic testing of integrity and functionality of the site's wastewater system.



Avetta

Only contractors in good standing with Avetta requirements were considered for the contract. Avetta (formerly known as PICS Auditing) provides supply chain risk management for some of the largest contractors in the world. SCE, as a qualified supplier, is required to continually demonstrate an exceptional dedication to safety.

SCE Provides Rapid Response for Lead Remediation.

Crew of 27 On Site within 36 Hours.

In early August, SCE was contacted by a long-standing Client with a time-critical challenge: to provide three nine-person lead abatement crews to work 24/7 on a three-week project calling for the removal of lead paint from a 73,000 square foot facility being renovated for food preparation. The facility was located nearly two hundred miles from any SCE facility so logistics in the short time frame were daunting. Nevertheless, within 36 hours of the initial call, the first-shift crew began the 7 am shift.

The mobilization effort was significant. In the few hours available, temporary housing was arranged and a team of 27 people, three service vehicles, an inventory of PPE materials, and SCE's Emergency Response Unit packed with all the tools and equipment necessary to perform the abatement, were en route.



SCE's Emergency Response Unit

Sr. Project Manager, Russell Enos, Field Site Safety Coordinator, Dean Argenta, and Chief Talent Officer, Ted Shone assembled the team and were onsite for the initial assignments. Director of Client Services, Bill Bradican, and Vice President of Operations, Nate Butler, coordinated the mobilization effort.

“We knew there was a tight production schedule with general contractors waiting in the wings for SCE to remove the lead paint from each zone,” notes Enos, “and meeting our production schedule was mission critical.”

Dollars for Denim.

Company Dress Code relaxed ... for a fee ... to help a friend.

With a goal of raising a \$1,000 annual gift to the Seven Loaves Soup Kitchen, SCE's office personnel now have the option of paying \$5.00 each Friday for a waiver of the company's prohibition of blue jeans in the office. The gift was the idea of Lauren Delguercio, one of SCE's most active volunteers for the Soup Kitchen. "We've raised over \$200.00 in only a few weeks," says Delguercio, "and we are on target to make our annual goal of \$1,000".

"We enjoy a special relationship with Seven Loaves," cites Delguercio. "Each month, we gather a team of SCE employees, their friends and family to prepare and serve great meals for some great people. It's a rewarding experience for all involved."



Another \$50! From left, John Bistran, Lauren Delguercio, Bruce Morgan, Mariah Wheeler, Ed Onzik, Dean Argenta, Adam Leonard, Brett Langendoerfer, Ted Shone and Jody Cordaro sport jeans in support of Seven Loaves.

SCE Opens Flagging Service.

New Team grows in third quarter.



Crews review Safety and Traffic Control Procedures at SCE Training Facility.

To meet an increasing demand for Flag Traffic Control Services, SCE has established a growing team of certified construction zone flaggers. Each flagger receives not only state-mandated training specifically on safe traffic flagging, but also extensive in-house safety training program that all SCE crew members receive. Available for long term contracts or short term demands, SCE's flagging crew can react with same-day coverage in Pennsylvania, New York, and New Jersey.

Most recently, SCE's Flagger Team controlled traffic near a Superfund Site remediation effort by the Army Corps of Engineers. SCE Flaggers kept traffic moving smoothly along county roads and highways in Pohatcong Township, NJ as construction crews installed borings at approximately 35 points along the roadways. Along with the flagger crew, SCE provided all necessary signage, cones, cans and attenuator trucks (trucks equipped with energy-absorbing bumpers and large flashing signs indicating lane closures).

Other recent efforts included traffic control in the Marcellus gas play where SCE flaggers assured safe traffic flow as service vehicles and well pad construction equipment entered and exited pad sites, and lane closures in multiple locations in Pennsylvania resulting from road milling, paving and construction efforts.

SCE Adds Two Contracts with Port Authority.

Third Quarter Contracts include PATH and JFK International Airport.

Highlighting the summer bidding effort, SCE has been awarded two contracts by the Port Authority of NY and NJ. The contracts bring the number of current contracts with the Authority to four. Three of the contracts call for multi-year on-call abatement services. The fourth features a Two Million Dollar lump sum contract.

In July, SCE was awarded the third in a series of multi-year on-call abatement contracts. Under the terms of this most recent contract, SCE will provide asbestos, lead and universal waste abatement for the Authority's PATH rail system. Existing contracts for similar activities are in place for the World Trade Center in New York City, and for the Authority's substantial marine terminals in New Jersey. SCE had already performed numerous work orders under the earlier Agreements. The trio represents opportunities for several years with projected revenues in the millions of dollars.



In August, SCE was the apparent low bidder on a Two Million Dollar bid for Remediation System Upgrades to the Bulk Fuel Farm and Satellite Fuel Farm at John F. Kennedy International Airport in Queens, NY. The work under the contract includes the replacement or modification to the existing dual-phase extraction system and related piping; modifications to well manifolds; and modifications to mechanical and electrical equipment at the facility.

The contract is not SCE's first effort at JFK Airport.

Earlier this year, SCE completed a very successful three-year contract serving as the Prime Contractor for the operation and maintenance of the same bulk fuel farm and satellite fuel farm. That multi-year contract provided remediation services for jet fuel release at both fuel farms as well as maintenance of pumping equipment at the site.

Performed at major transportation hubs and public facilities representing some of the highest profile properties in the world, Port Authority contracts require the utmost in safety and security compliance within secure operational facilities.



Contractor Transport Gains Traction.

New Company adds equipment and clients.

The third quarter has seen SCE's sister company, Contractor Transport, evolve. Created in mid-2016, Contractor Transport has since been granted Pennsylvania PUC common carrier authority to carry property between points in Pennsylvania, and federal authority with both DOT and MC certificates to carry property for hire in the United States.

The company's fleet is growing weekly. Currently, Contractor Transport can provide transportation services with tri-axle dump trucks, water trucks, conventional tractors, and lo-boy equipment hauling trailers. With its array of equipment and operating permits, Contractor Transport is not only available for SCE's internal transportation needs, but also is a for-hire transportation solution for the business community.

Brett Langendoerfer, Fleet Manager, is enthusiastic. "Contractor Transport represents our first effort to



provide pure transportation services to our clients and the response has been encouraging." Tapping on experience developed by SCE's Operations Department in managing its own logistic requirements, Contractor Transport has literally hit the road running with a full complement of experienced drivers, fleet managers, and safety personnel.

"We are monitoring every aspect of the operation to



make sure we have the finest equipment and the best trained and experienced drivers available," notes Langendoerfer. Technology plays a key role as well. GPS tracking, forward and rearward facing cameras, electronic logs, and real-time maintenance tracking are just a few of the innovations being implemented in the new operation. Outside consultants round out the effort with highly respected training programs, fleet maintenance, and regulatory compliance.

Safety policies that are the hallmark of SCE's reputation have transitioned to Contractor Transport as well. Loss Prevention Observations, Near Loss Incidents, and behavior-based safety systems are all part of the new transportation company.

Also carried over from SCE's safety culture is the Stop Work Policy which gives any employee the unquestioned authority to stop work for safety concerns. Drivers and technicians are trained to recognize unsafe conditions whether they are mechanical, environmental, or employee-related, and empowered to immediately stop the operation of the vehicle at risk. Employees exercising this authority are commended for their attentiveness.

"We want our drivers to feel empowered," cites Field Safety Manager Dean Argenta. "They need to say 'no' with confidence when weather conditions, vehicle conditions, their own physical condition, or even their hours of service, prohibit the safe operation of their vehicle. It is a culture of safety that we have instilled in our drivers from day one."

SCE Performs Power Plant Clean-out.

*Project Features a Tight Schedule and Value Engineering***

Working within the time limits of the scheduled shut-down of a natural gas fired power plant in September, SCE completed a project calling for the drainage and sludge clean-out of a cooling tower basin. The Scope of Work called for the company to remove approximately 400,000 gallons of liquid to be transferred to an industrial waste treatment basin. The project required confined space entry equipment, atmospheric monitoring equipment, a vacuum truck/guzzler, and an array of tools and pressure washing equipment. In addition, SCE profiled and disposed of 20 tons of river sludge. Because of the narrow window during which the plant was shut-down, SCE worked 24-hour days for the duration of the project.

As an alternative to the fluid decanting method specified within the Engineer's original Request for Proposal, SCE suggested the use of filtration dewatering bags to dewater the sediments removed



from the basin. This method minimized confined space entry and allowed the clean sediment to be disposed at a landfill for beneficial reuse without stabilization or fixation.

This example of value engineering is reflective of SCE's core value to preserve and protect the environment by helping clients make positive, safe, lasting and substantial improvements in their environmental practices in the most economically sound way. "In addition to our people, our expertise is one of our most valued assets," cites company President, Jody Cordaro, "We take great pride in delivering that experience to our clients every day."

** Value Engineering Over The Years.

Power Plant Clean-out Continues a Tradition of Creative Solutions.

SCE's decanting modification at our Client's power plant is the latest of a long tradition of cost-saving, environmentally friendly solutions. Over the years, SCE's team of experts has literally saved clients millions of dollars.

In **Port Jervis, NY**, SCE value engineering saved our client over \$300,000. During the installation of a slurry wall, SCE crews encountered unexpected large cobbles at 20' below ground surface. The traditional solution would have been to over-excavate the area. Instead, within 48 hours, SCE had custom manufactured a GPS monitored 8' ripper tooth. The multi-ton unit was mounted to a long reach excavator and ripped the cobble into manageable material with no over-excavating.

On **Parris Island, SC**, SCE was retained to remove soil and sediment. Faced with migration of tidal waters into the excavation, SCE engineered a temporary tidal dam consisting of CY sandbag blocks, an impermeable liner, sediment filtration and water pumps. The same sand would later be backfill on the site. Compared with traditional shoring or sheet piling, the tidal dam saved the client in excess of \$427,000.

Continued on page 7

Value Engineering.

Continued from page 6

In **Columbus, OH**, SCE value engineering delivered over \$1 Million in savings. As part of the closure of a RCRA Solid Waste Management Unit, SCE had to dispose of nearly 9,000 tons of lead-contaminated waste. After extensive analysis of disposal options, the best alternative was to stabilize the lead on site and then dispose of it as non-hazardous material.

In **Jenkins Township, PA**, SCE encountered over 7,000 tons of radiological material in the demolition of a manufacturing plant. SCE developed a strategy for the segregation of brick utilizing Geiger meters and on-site sampling. This value engineering saved our client in excess of \$600,000.

Big Projects Wrap Up in Q3.

Two Major Projects Demobilize.

In late August, SCE's asbestos abatement effort at the New York City Housing Authority project at the Harlem River Houses wrapped up. The project is part of a \$17 Million renovation undertaken by the Housing Authority.

After more than a year on the site, SCE has completed its scope of work and demobilized. On site supervisor, Steven Button, oversaw the completion. "Our team delivered great results under difficult working conditions," he notes. "Working within the regulatory framework of the New York City Housing Authority, coordinating with the numerous other trades and unions, and meeting an aggressive production schedule in the middle of a fully occupied residential community was a great challenge and I could not be happier with the results our team delivered."

In September, SCE concluded its role in the multi-million dollar remodeling effort at 'The Westchester,' an 890,000 square foot, upscale shopping mall in downtown White Plains, New York. SCE's role in the overall remodeling and renovation of the facility included the partial demolition of existing structures in the interior, exterior and food court areas of the mall.



Abatement at West Point.

Project is latest in a series.

Although details remain client confidential, SCE has completed its most recent demolition and asbestos abatement contract with a nationwide client providing engineering services to the military. Over the course of several years with this client, SCE has completed contracts at military facilities including multiple projects at **West Point Military Academy**; **Fort Hamilton** in Brooklyn, New York; **Fort Jackson** in Columbia, South Carolina; **Mitchel Manor** in East Meadow, New Jersey, and others.

Most contracts involve the abatement of mold or asbestos, and some form of either interior or exterior demolition. Additionally, SCE has been invited to work on projects across the country including work at **Minot Air Force Base**, Ward County, North Dakota; the **White Sands Missile Range** in southern New Mexico; **Fort Stewart** in Liberty County, Georgia; and the **Groton Naval Submarine Base** in New London, CT.

Director of Client Services, Bill Bradican, serves as the Client's in-house spokesperson. "We are honored that our client has included us in so many projects and bidding opportunities with these very high profile properties."



As we approach the end of a long presidential election cycle, I've grown a bit numb to the charges and counter-charges, the promises made and broken, the speeches and scandals ... and the commercials. Out of it, though, I had a revelation in the form of a biblical quote from a political pundit - certainly an unusual combination.

While discussing the candidates and their teams, the commentator quotes Proverbs 27:17: "As iron sharpens iron, so one man sharpens another." Admittedly, I was unfamiliar with the passage, yet I immediately researched it and instantly found the concept an intriguing business model.

Consider a knife. Hone it with soft pine and it gets no sharper and shines no brighter. But take another piece of metal, a sharpener, and rub the two together: the knife glows brighter, its edge turns razor sharp. Because it was tested by hard metal, the knife is the best it can be.

It is a premise upon which SCE hones its business skills both within and outside of the company. Every day, we are challenged internally to be our very best. We hold each other to a higher standard and we each individually expect to be held to that same high standard. We do this not to dull and damage, but to sharpen our skills.

Externally, we welcome clients who push us to new levels of skill. I am reminded of a client several years ago that required LPS training for crews. Our initial, and short-lived, reaction was to train a single crew in this higher standard of safety training. We quickly realized that the better approach, the one that we follow to this day with every single employee in our company, is to require all of our crews to meet the highest safety standards of our most demanding clients. In retrospect, this decision has saved lives.

We welcome clients who "up our game" and make us a better company and keep our edge sharp. And we welcome clients who are open to our efforts to make them more exceptional.

Iron sharpens iron.

Jody Cordaro, President

SCE ENVIRONMENTAL GROUP, INC.
1380 MT. COBB ROAD
JEFFERSON TOWNSHIP, PA 18436
(570)383-4151 (570)687-9524 (FAX)

Join us online.



www.SCEEnv.com



[Linked in.](#)