



Waste is a Terrible Thing To Mind ...

SCE Environmental Group, Inc.

Jersey City, NJ

Uniondale, NY

Smithton, PA

Lake Ariel, PA

Fairmont, WV

Around the Clock.

Major Remediation Effort Dominates First Quarter.



Crews apply Rusmar Foam for odor containment.

water is being pumped into two 20,000 gallon water tanks and allowed ample time for any suspended solids to settle out before the water is pumped into an onsite treatment system. SCE will provide restoration with clean RCA, crushed quarry stone, and paving.

While some of the crew members worked on soil removal, load out, and dewatering, others were tasked with mitigative measures in accordance with the Community Air Monitoring Program. Crews utilized a

(Continued on page 2)

In November, SCE was awarded a major contract by Roux Associates for an Exxon-Mobile petroleum remediation project in Brooklyn, New York. Work began in December and continued throughout the First Quarter of 2018. Throughout the winter, SCE crews worked extended hours and braved the cold in this large scale excavation project.

The scope of work includes three hot spot excavations and the disposal of approximately 7,300 cubic yards of soil from various locations. Per the contract, SCE will complete the excavation and stockpiling of soils per plans; bench and slope back the excavations as necessary per OSHA safety requirements; and install a slide rail shoring system for four of the areas throughout the total project.

For dewatering, all



Around the Clock (Continued from page 1)



Rusmar Foaming Unit to control odors and VOCs from leaving the site. RusFoam is a non-hardening protein based foam that can provide odor control and site protection from overnight to over the course of a weekend. SCE crews applied the foam to provide overnight containment of contaminated soils.

The effort included the work of vac-

uum water trucks operated by SCE's sister company, Contractor Transport, to transport water collected in dewatering activities to an onsite treatment facility.

Work is expected to complete early in the Second Quarter of 2018.



“Stellar”

Words of Praise from a Key Client.

While it is always rewarding to hear good comments back from clients, there is something particularly fulfilling when Exxon's Global SSH&E Manager performs a safety audit at a major petroleum remediation project and finds SCE's effort “stellar”. Our primary contact at Roux Associates noted in an email to SCE company president, Jody Cordaro, “We typically do a solid job with visitors but it sounded to me like [Exxon's Safety Auditor] was extremely impressed. I've never heard the word “stellar” used in my time so that makes me quite proud. ... to hear that they walked away with only positive comments is impressive.”

In turn, Mr. Cordaro paid the compliment forward with this company-wide email referring to the audit findings:

Team,

Congratulations to Mike Dahlgren and his entire crew on this project; these accolades are nothing short of spectacular. Also, congratulations to the Contractor Transport crew that provided dump truck and vacuum truck services on this project. Awesome job and impressive safe work by all! THIS IS A VERY BIG DEAL!

Congratulations to SCE's Mike Dahlgren, Jose Cruz, Frank Summa, Sergio Ayala, Luis Pellot, Dennis Rowand, Tim Mason, Mossimo Vommaro, Israel Santaigo Caban, and Steve Button and CT's Tony Martin, Justin Kroll and Alex Hoffman. WELL DONE!

SCE Completes FAA Work.

Second project in under a year.

At the close of 2017, SCE signed an agreement with the Federal Aviation Administration for the abatement of asbestos, demolition and site remediation of a Customs and Border Protection radio tower and associated building located in Malone, New York. Asbestos Containing pipe insulation, joint compounds, sheet-rock, and roofing materials must all be abated by licensed technicians prior to ultimate demolition of the facility. Work began and was completed within the first quarter of 2018.

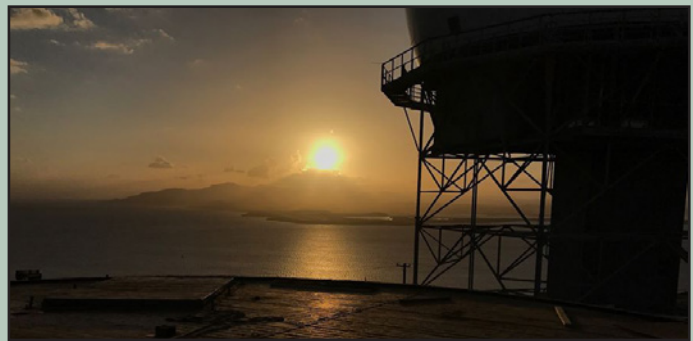
The contract comes on the heels of a similar but larger undertaking for the FAA. That project mobilized last June and was completed in September and required the abatement of hazardous materials and demolition of a radar facility at the Air Route Surveillance Site located at Guantanamo Bay Military Base. The team mobilized in late June and by early August had removed the dome from the radar tower. By mid-September, the entire facility had been demolished, the land was restored, and the team had demobilized. The project was completed ahead of schedule with over 3,100 safe man-hours worked.



Pre-Demolition at Malone Customs Border Tower.



Post-Demolition at Malone Customs Border Tower.



Radar at Guantanamo Bay

From the Sports World ...



As the Brooklyn Remediation project scaled back towards the end of the first quarter, Roux and SCE employees found themselves on separate teams as a parking lot softball game between the companies provided welcome relief from the work of the project. Roux went on to win the game 7-6. We won't confirm whether SCE's Client Relations Director had any say in the outcome!

Port Authority of New York and New Jersey.

PATH Project completes.

In the First Quarter, SCE crews completed work under a Two Million Dollar contract with the Port Authority for Remediation System Upgrades to the Bulk Fuel Farm and Satellite Fuel Farm at John F. Kennedy International Airport in Queens, NY. SCE crews replaced or modified components of the existing dual-phase extraction system and related piping; modified well manifolds; and modified mechanical and electrical equipment at the facility.

With that contract drawing to a close, SCE was awarded a new contract in 2018 for the Operation and Maintenance of the same Bulk Fuel Farm. This multi-year contract calls for remediation services for jet fuel release at both fuel farms as well as maintenance of pumping equipment at the site. Work under the O&M contract began mid-way through the first quarter and will run for at least two years. The contract is not SCE's first effort at JFK Airport. In 2015, SCE completed a very successful three-year contract serving as the Prime Contractor for the same O&M work at the facility.

Performed at major transportation hubs and public facilities representing some of the highest profile properties in the world, Port Authority contracts require the utmost in safety and security compliance within secure operational facilities. SCE has enjoyed numerous contract opportunities with the Port Authority including a series of multi-year on-call abatement contracts whereby SCE provides asbestos, lead and universal waste abatement for the Authority's PATH rail system, the World Trade Center in New York City, and for the Authority's substantial marine terminals in New Jersey.

In the First Quarter, SCE performed lead based paint abatement, repair and repainting of viaduct girders at the Port Authority Trans Hudson (PATH)

Harrison Station in Harrison, New Jersey. SCE crews utilized sponge jet media to blast paint and rust off of the structure's girders. Once prepared, the girders were painted with a three-coat zinc, epoxy and polyurethane protection. The project included the grinding and repainting of approximately one hundred twenty feet of girders on the north side of the station and over one hundred feet of girders on the south side. Because the station was fully operational, careful planning and execution of a safety plan to control vehicle and pedestrian traffic was paramount.

PATH is a rapid transit railroad serving Newark, Harrison, Hoboken, and Jersey City in metropolitan northern New Jersey and Manhattan in New York City. Under the terms of this contract, SCE provides asbestos, lead and universal waste abatement for the Authority's PATH rail system.

Existing contracts for similar activities are in place for the World Trade Center in New York City, and for the Authority's substantial marine terminals in New Jersey.



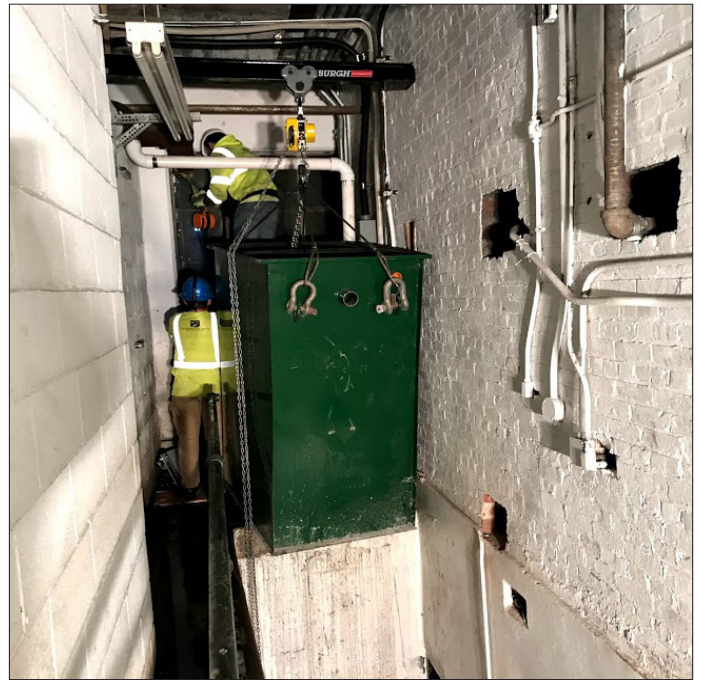
Around the Company - Quarter 1

A busy First Quarter kicks off 2018.

NY, NY. At Alfa Romeo of Manhattan, SCE crews removed an old Oil Water Separator and installed a new one. In addition, the team installed HDPE curbing along a concrete edge of the facility. Installation of the new Oil Water Separator was hampered by the challenging logistics of the site. Scaffolding was constructed on the outside of the building and a window was removed to accommodate the removal of the old separator and the installation of the new one. The separators were moved via a hoist system affixed to a temporary steel beam in a stairwell.

Flemington, NJ. At the former Peapack Gladstone Bank in Flemington, NJ, SCE was tasked with the remediation of soils and other conditions surrounding the commercial property. The scope of work included the removal of bollards, landscaping, trees, HVAC units, concrete steps, and planters as well as substantial excavation of impacted soils around the perimeter of the building. After remediation, all areas had to be restored with asphalt paving.

Middlesex, NJ. SCE crews provided remediation services at the Bayer Crop Science facility. The scope of work included the excavation and disposal of 385 cubic yards of impacted soil materials, the installation of 640 square yards of geotextile stabilization, and the restoration of clean fill, asphalt and utilities disturbed in the remediation effort.



SCE Installs Biosparge System.

System is latest in long history of installations.

In Delran, NJ, SCE crews installed a biosparge remediation system at a retail petroleum service station. The site featured an operative gasoline service station that required careful traffic and pedestrian control and the utmost in safety practices. All SCE personnel carried OSHA 40 HAZWOPER training as well as certification in the Loss Prevention System (LPS) of behavior based safety.

The project is one of many such systems installed by SCE over the last decade. The Delran system incorporated over two hundred fifty feet of system trenches that housed the biosparge collection system. In addition, SCE crews installed the biosparge equipment on concrete pads and energized the system.



Demolition and Site Prep Contract Enters Latest Phase.

Multiple phases over six years.

In a project extended from one phase to another over six years, SCE has been involved in the extensive remediation and demolition of a 1,000,000 square foot former picture tube manufacturing facility in Pittston, PA. Throughout the fourth quarter of 2017, SCE continued with the next phases of the project: site preparation for future development.

Work continues in the first quarter of 2018. This phase consists of footer, foundation, pier cap and sub slab removal from over 25 acres. Material have been removed, processed, crushed and placed on the site for final backfill activities.

As part of the effort, SCE constructed a system for collecting and treating ground water. Part of the system is a temporary holding tank used for the storage of the water prior to treatment and disposal. The massive tank has a rated capacity of two million gallons - equivalent to about one hundred inground swimming pools.

In November of 2015, Engineering News-Record Magazine presented SCE with a Safety Award as part of the magazine's "Best Projects" contest - an annual juried competition featuring entries from across the country and across the construction industry.



“SCE Cares” Co-Sponsors Night to Shine.

Worldwide event for those with Special Needs.



SCE is proud to be the Platinum sponsor of the Night to Shine event this year in northeastern Pennsylvania. Night to Shine is an unforgettable prom night experience for people with special needs ages 14 and older.

Every guest of Night to Shine will enter their prom on a red carpet complete with welcoming friendly paparazzi. Once inside guests will receive VIP treatment including hair and makeup stations, shoe shining stations, corsages and boutonnieres, a karaoke room and of course, dancing!

The highlight of the night will come when every one of the Night to Shine guests is crowned as a king or queen of the prom.

Two hundred thirty-three honored guests from the special needs community were crowned kings and queens of the prom, and they had the time of their life. Over 500 volunteers participated.

Night to Shine is a worldwide experience sponsored by the Tim Tebow Foundation. On February 9, 2018, five hundred thirty seven churches from around the world, including the Parker Hill Church in Dickson City, Pennsylvania, hosted Night to Shine for approximately 90,000 guests through the support of 175,000 volunteers. If you would like to participate in next year's event, visit www.timtebowfoundation.org and follow the links to the Night to Shine participant host page.



Last Thoughts ...



As much as I enjoy the sense of accomplishment as one year draws to a close, I am just as motivated by the sense of challenge as another year opens. That sense of challenge is particularly acute as we open 2018 because the goals SCE and its sister company, Contractor Transport, have set for themselves are nothing short of astounding. And it's not just the goals. We have recognized that we can only grow with a fundamental restructuring of how we do business.

The buzzword in SCE's executive meetings these days is "scalability". We cannot reach our goals without the ability to build the business beyond the capacity of a handful of key employees. We need to build the model that leverages our unique skills in such a way that we can exceed the limits of particular individuals. We need to be scalable.

You'll see the changes in 2018. They've already started. Our Finance Department has been revamped from the ground up. Talented people with experience in the dynamics of a growing company are already in place and building the financial support system that will power this juggernaut.

But it is so much more than that. We are building an Operations Department to support the amount of work our goals mandate and to do so within the margins our budgets demand. We are strengthening our bidding efforts, our client services, and all the ancillary services that keep the system running. And at every turn, we consider scalability.

We are taking SCE to new heights in 2018 because of the vision and commitment of our team, the loyalty of our clients, and the hard work of our "stellar" field crews. It is an exciting time to be here and I am overwhelmingly thankful to be surrounded by the talent and energy that define SCE Environmental.

Wishing you a healthy and prosperous 2018.

Jody Cordaro, President

SCE Environmental Group, Inc.
1380 Mt. Cobb Road Jefferson Township, PA 18436
(570)383-4151 (570)687-9524 (fax)

Join us online.



www.SCEnv.com



[Linked in.](#)