



**Waste is a Terrible Thing To Mind ...**

**SCE Environmental Group, Inc.**  
**Jersey City, NJ   New Matamoras, OH   Williamsport, PA   Lake Ariel, PA   Fairmont, WV**

# Help Wanted.

## *SCE Rolls Out Enhanced Staffing Service.*

After successful test modifications in 2017 and 2018, SCE has fully redeployed its Personnel Support Division to assist other companies and contractors in meeting the staffing challenges of a dynamic workforce marketplace.

The program is designed to capitalize on SCE's proven track record for attracting, hiring, and training the finest field and supervisory personnel and serves three important goals: (a) to provide SCE's client with a well-trained temporary employee, (b) to protect SCE employees with a steady source of work that minimizes the natural fluctuation of any one contractor's work cycle,

and (c) to bolster SCE's ability to attract and retain the finest employees.

This is not a new business line for SCE. The company has been engaged in the personnel support business for over fifteen years but recently revamped its presence. In Nanticoke, Pennsylvania, an SCE crew has been temporarily assigned to a contractor engaged in a significant site preparation effort that includes an on-site rock crushing operation and the movement of crushed rock to various locations at the site. The temporary workforce includes haul truck drivers, loader and excavator operators, and crushing plant workers. SCE's client provides all necessary equipment. The effort has been underway throughout 2019 and is expected to continue for the duration of the year.

Similarly, at another site in Northeastern Pennsylvania, SCE crews operate numerous haul trucks, loaders and excavators at a major site preparation effort on behalf of a contractor forced to relocate its own personnel to an emergency effort. Had it not been for SCE's temporary crew, the contractor's equipment on site would have lain dormant.



*SCE offers an array of professionals and skilled craftsmen.*

*Continued on page 2.*

## **SCE Rolls Out Revamped Staffing Division.**

*(Continued from Page 1)*

**S**CE's Personnel Support Division is designed with the flexibility clients need to maintain proper staffing levels in light of fluctuating workloads, multiple service locations, seasonal demands, and emergency responses. From general laborers to uniquely skilled specialists and professionals, SCE is ready to serve as its clients' personnel support source.

SCE is one of the few staffing companies dedicated specifically to the environmental and construction markets. Our laborers and specialists have the education, licenses, training, certifications, experience and work ethic necessary to meet or exceed clients' employee expectations. And SCE workers can be dispatched to project locations around the world on short notice.



Benefiting from SCE's expertise in the training and implementation of behavior based safety programs, SCE crews assigned to client projects come to the jobsite prepared to perform their work efficiently, safely and with the expertise the task requires. These top-flight personnel are available on a temporary basis, either part time or full time, as clients needs require, and can stay on site from one day to several months.

Further enhancing the value of the service, SCE provides workers compensation insurance and files and pays unemployment, FICA, and all other federal, state, and local payroll taxes and provides all medical certifications and health and safety training. SCE promises streamlined paperwork, weekly convenient invoicing, and no long term contract commitments. As an added feature, SCE can provide temporary union labor as needed.

SCE offers staffing solutions to the oil and gas industry as well. Spanning over 15 years and working with all of the major petroleum companies throughout the world, SCE has a proven track record in the petroleum market. We understand the oil and gas production process from exploration and production to transportation and delivery.



Oil and Gas Disciplines include: Assessment; Construction; Damage Prevention; Designers; Environmental Technicians (HAZMAT); Facility Coordinators; GIS Specialists; Health & Safety Officers and Technicians; Heavy Equipment Operators; Laborers; Maps & Record Coordinators; Materials Management; Meter Readers; Operations Support; Outage Support; Planners & Schedulers; Pipeline Specialists; Professional Engineers (PE); Professional Geologists (PG); Project Managers; Property Assets Specialists; Right-of-Way Agents; Sample Technicians; Surveyors; Wastewater Plant Operators; and Wetland Specialists.

***For more information, email [CReese@scenv.com](mailto:CReese@scenv.com).***



## SCE Completes Bahamas Project.

In the second quarter, SCE demobilized after completing a contract to install a ground water treatment system at the Baha Mar Resort, New Providence, Bahamas. This is the second system SCE installed at the Mega Resort and includes fifteen Air Sparge wells and four LNAPL recovery trenches with draw down submersible pumps and skimmer pumps recovering the LNAPL on the surface of the LNAPL layer. There is also one infiltration trench with an aerator.

With work complete and the system operational, a skeletal crew remains on site for the foreseeable future to transition the operation to the Resort property owner.

## Preserving the Lace Factory.

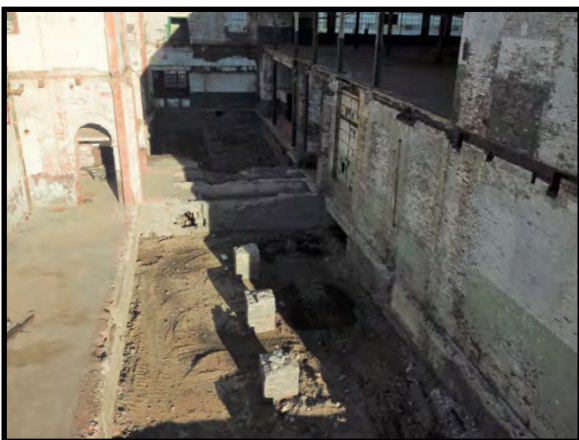
*Latest Phase of Renovation features many conservation efforts.*

In the second quarter, SCE's role in the renovation of the former Scranton Lace Factory ramped up. With major deconstruction complete, crews focused on clean-up and restoration efforts at the remaining facilities on the site.

Conservation of existing historic landmarks has played a critical role in the process of repurposing the century-old facility from lace manufacturing to a mixed use residential, artisan, entertainment and shopping venue. The project, known as "Laceworks", is valued at more than \$50 Million.



*Former factory floor to become open-air courtyard.*



*Village Square.*

Typical of the dedication to conservation, deconstruction was surgical. Mountains of brick are hand-chiseled and restored for future use. Recovered heart pine timber, felled from longleaf pine forests over a century ago and prized for its strength and warm red color, is stacked in enormous lines stretching the property, awaiting future building and woodworking projects at the site. Lace designs and other documents uncovered in the process are preserved for historical significance.

The project features the strategic removal of obsolete buildings thereby creating dramatic open courtyards between buildings that will be restored. Two long buildings, constructed in 1891, each featuring rows of two-story arched windows, form a canyon in which an enormous courtyard will occupy what was once factory floor. Similarly, nestled into a U-shaped area, a Village Square will replace what is now a collection of old foundation piers.

## A Busy Second Quarter.

*Flooding rains and numerous projects highlight Quarter 2.*

**S**CE crews were fully occupied during the second quarter. Among the ongoing projects are the following:

SCE's permanent on-site crew continues to monitor and repair the bulk fuel farm at JFK Airport in Queens, NY. The project is part of a multi-year contract awarded to SCE in 2018 by the Port Authority of New York and New Jersey. Crews monitor all of the pumping equipment, perform routine maintenance, and make repairs as necessary. Under a prior contract, SCE installed a new multi-million dollar pumping system at the facility and now operates the same system. From 2014 thru 2016, prior to SCE's installation of the new pumping system, SCE provided similar operation and maintenance services for the old system at the facility.

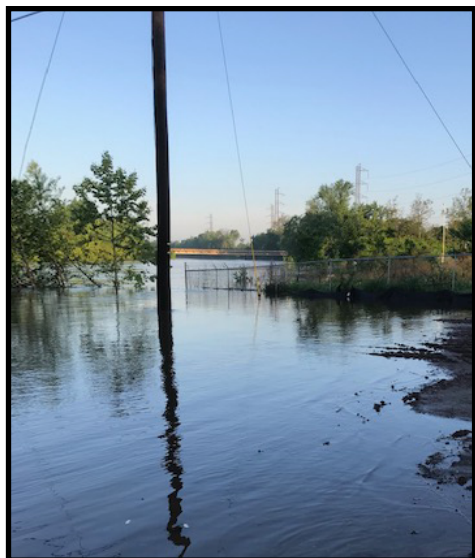


In Brooklyn, NY, SCE crews excavated impacted soil hot spots at a former retail gas station. A slide rail shoring system was utilized to stabilize the dig to a depth of 18 feet. Soils impacted by petroleum were removed and the site was restored with clean fill.

At a second former gas station, this time located in the Bronx, SCE mobilized a crew for a project requiring soil remediation of petroleum impacted soil. Again, slide rails will be used to stabilize the dig to depths of 18 feet. Of particular note, the project will utilize flowable fill - a concrete-like product used in the excavation of trenches. The site is to be rebuilt as a new gas station.

In Oceanside, NY, SCE was contracted to demolish and remove a concrete slab and to repair impacted asphalt. The slab was up to two feet thick in some locations. The challenge at this site was the designation of the area as an Heavy Equipment Exclusion Zone. Because of this HEEZ designation, SCE had to work around significant





logistical problems and coordinate work and hours with others on the active site.

In Middlesex, NJ, SCE was retained to perform soil excavation, capping and site restoration on a 4.5 acre parcel. The project was burdened by a relentless rain pattern that frequently flooded the site and made work impossible. Upon completion, SCE restored the dig and planted hundreds of shrubs to vegetate the site.

Also in Middlesex, NJ, SCE aided in the preparation of a modular building slab project. As part of the effort, crews excavated contaminated soil, installed a geotextile stabilization layer, and restored the site.

## Video Program Initiated.

*Mike Wanta delivers a video State of the Company.*



In the second quarter, SCE's President, Michael Wanta, filmed the first in an ongoing program to provide company personnel with an online video update on the company, its current undertakings, and its future. Providing a summary of first quarter activities, Mr. Wanta acknowledged the efforts of SCE's team in the first quarter and laid out a road map of the second quarter and beyond. The video is available to company personnel online.

## SCE Completes Another PATH Platform LBP Abatement.

SCE's crews completed a large-scale lead based paint abatement project at a Port Authority Trans-Hudson (PATH) Train Platform located on Christopher Street in New York City. This work was completed under SCE's existing multi-year Port Authority of NY and NJ Contract.

Overall, the project included the grinding and repainting of girders on both sides of the platform. Because the platform was fully operational, careful planning and execution of a safety plan to control vehicle and pedestrian traffic was paramount.

PATH is a rapid transit railroad serving Newark, Harrison, Hoboken, and Jersey City in metropolitan northern New Jersey and Manhattan in New York City. Under the terms of this contract, SCE provides asbestos, lead and universal waste abatement for the Authority's PATH rail system.

SCE has enjoyed numerous contract opportunities with the Port Authority including a series of multi-year on-call abatement contracts whereby SCE provides asbestos, lead and universal waste abatement for the Authority's PATH rail system, the World Trade Center in New York City, and for the Authority's substantial marine terminals in New Jersey.

# **SCE resumes Pipeline Terminal Work.**

*Latest project in long line of work for large pipeline company.*

In Brooklyn, NY, SCE was retained by one of the nation's largest energy infrastructure companies to repair, replace and upgrade several components in a pipeline terminal. The project included the replacement of piping, underground vault installation, monitoring well upgrades, concrete slurry pipe closure, and trenching. Once installed, the vault was prepared to accept PVC pipe, corrugated pipe, and electrical conduits.

The project is not SCE's first for this client. In New Jersey, SCE was retained on several occasions by this same company to undertake diverse projects on the company's 150+ acre active liquid petroleum/chemical distribution terminal. For example, SCE was called upon for the installation of a twenty-three well remediation system, including fabrication and welding onto an existing pipe rack system. Under another contract, SCE installed a massive concrete pad in the middle of the terminal. The pad was subsequently fitted with large chemical tanks used in a remediation system.

SCE's experience with contaminated soils proved essential in the handling and transport of RAD (TNORM) soils in yet another contract at the site. In addition, SCE has performed demolition and decommissioning, asbestos abatement, tank cleaning and removal, utility relocation, HAZMAT abatement, and other decontamination efforts.

Over the years, SCE crews have worked over 50,000 hours at these pipeline facilities with zero accidents or injuries.





# Military Housing Projects Continue.

*SCE crews active at two Military Bases.*

Progress continues on SCE's multi-year rehab of military housing at the Ft. Hamilton military base in New York City. The Fort remains the last active duty military post in New York City. By the close of the second quarter, SCE had completed the second of twelve buildings and had begun a third.



The project is approximately one month ahead of schedule and has attracted the attention of the Base Commander who scheduled an assembly with the entire crew to express his appreciation for the quality of the work and the safe manner in which the project has been conducted.

Two hundred miles away, at another military facility, SCE crews were working at a second housing restoration. The scope of work is similar: to repair and rehab the exterior surfaces of multi-family units and to preserve the historic integrity of the structures.



In the second quarter, the exterior of the historic apartments at the military base were repaired as necessary, loose paint removed, and all walls, columns, fascia, crown molds, handrails, and soffits were repaired and repainted.

With the completion of the apartments rehab, crews will turn their attention to Officer Quarters next. The project will continue throughout 2019.

These projects represent the latest in a long string of military housing projects the company has undertaken. Projects in other years have included remediation and abatement work at facilities at West Point, Fort Adams in Newport, RI, Fort Jackson in Columbia, South Carolina, Mitchel Manor in East Rutherford, New Jersey, Constitution Island in New York, and others.

## *Last Thoughts ...*



This June and July represent truly astounding anniversaries of milestones in our nation's history. Milestones achieved in the face of great challenge and adversity and with an incredible combination of grit, dedication, and historic bravery.

On June 6, 1944, seventy-five years ago, over 150,000 American, British and Canadian forces attempted the impossible: to invade a Nazi-occupied Europe by landing on five beaches heavily fortified by German artillery and natural cliffs. D-Day. A suicide mission to be sure - and they knew it. In only a few hours, nearly 5,000 Allied soldiers were dead and countless thousands wounded. To put it into present-day terms, more died in those few hours than our total casualties in the 8-year Iraq War. But their efforts were not in vain. From this foothold, Allied forces would ultimately defeat Hitler and the Nazi Army.

On July 20, 1969, fifty years ago, Neil Armstrong and Buzz Aldrin, stepped on to the moon surface with Armstrong's iconic quote, "That's one small step for man, one giant leap for mankind." The achievement was the culmination of a challenge that John Kennedy laid down for the nation only seven years earlier when he declared, "We choose to go to the Moon." I can't help but ponder the staggering courage to sit atop over six million pounds of explosive rocket built, as astronauts Alan Shepard and John Glen quipped, by the lowest bidder on a government contract.

I think these milestones represent America at its best. An America sadly lost in these days of political division, personal derision, and social media intrusion that tear at the fabric of our nation. As we enjoy this time of year when new graduates are passed the torch of the future, we should all be reminded that, in many ways, the success of their future can be found in the lessons of our past.

Jody Cordaro  
Chief Executive Officer

SCE Environmental Group, Inc.  
1380 Mt. Cobb Road Jefferson Township, PA 18436  
(570)383-4151 (570)687-9524 (fax)

Join us online.



[www.SCEnv.com](http://www.SCEnv.com)



[Linked in.](#)